
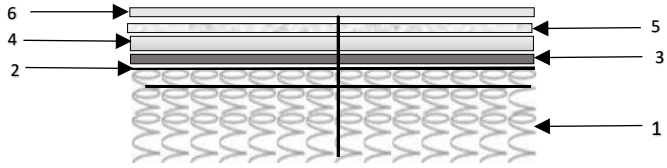


## SUPERIOR CONTRACT MATTRESS - SPEC SHEET

### Product Description

<b>Product Code:</b>	SUPERIOR CONTRACT	 <p style="font-size: small; margin-top: 5px;">*image for illustration purposes only</p>
<b>Product Ref:</b>		
<b>Customer Ref:</b>		
<b>Depth (cm):</b>	20 (approx.)	
<b>Additional Info:</b>	PLEASE DONOT TO BEND/FOLD MATTRESS	

<p><b>Superior Contract S5 Mattress Construction</b> *<small>image for illustration purposes only</small></p> 	<ol style="list-style-type: none"> <li>1. Open Coil Spring Unit 13.5 gauge</li> <li>2. Wire Rod Edge 6 Gauge</li> <li>3. 1050 Gms Needed Polyprop Pad x 2</li> <li>4. 900 Gms Needed filling (60% Wool) x 2</li> <li>5. Fibre Bonded Pad 200 Gms</li> <li>6. Loxley Stripe Cotton Fabric</li> </ol> <p>+. Wool Safe Barrier</p>
--	---

### Fabric

Type	Composition	Treatment	Add. Treatment
Loxley Stripe	100% Cotton	Standard Fr	Fr2

### Additional Fr Insulator

Type	Weight	Composition	Add. Info
Inter - Liner	300 Gms	Wool	N/A

### Quilting / Tufting

Panel Quilted	Hand Tufted	Border Quilted	Border quilt design
N/A	Yes	N/A	N/A

### Additional Treatment

Anti -Allergy	Hypo-Allergenic	Mattress Tape edge	Water Resistant
Yes	Yes	Fr2	N/A


### Handles/Air Vents

Handles	Air vents	Flag Stitched	Chrome
Yes	Yes	N/A	Either Side

### Pads/Fillings/Fibre

		Micro Layered	General
Layer 1 Composition	Polyprop Needed Pad		<b>×</b>
Layer 1 Weight	1050 Gms		
Layer 2 Composition	Needed Filling	<b>×</b>	
Layer 2 Weight	900 Gms		
Layer 3 Composition	Fibre Bonded Pad	<b>×</b>	
Layer 3 Weight	200 Gms		

**Spring Unit**

	Type	Open Coil
	Spring Gauge	13.5 gauge
	Wire Rod Edge	6 gauge
	Side Supports	Yes

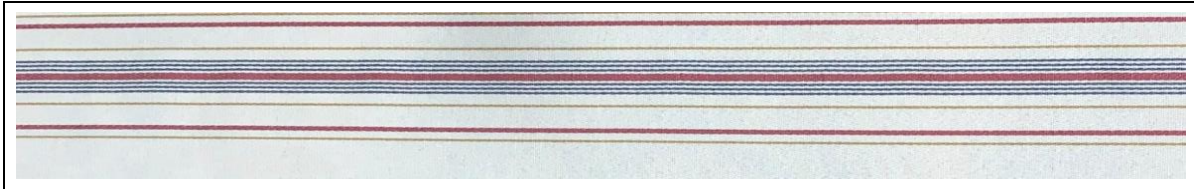
**Packaging**

Mattress bag Weight	300 gauge
---------------------	-----------


**Mattress Firmness 1 > 10 (10 being firmest)**

1	2	3	4	5	6	7	8	9	10
---	---	---	---	---	---	---	---	---	----

**Fabric**



**Fire Labelling/Traceability**

Fire label	Batch Codes
	<p><b>190518</b> - prep</p> <p><b>220518</b> - production</p>