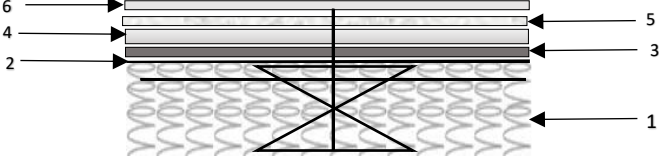


TULIP ORTHO CONTRACT MATTRESS - SPEC SHEET

Product Description

Product Code:	Tulip Ortho Contract	 <p style="font-size: small; margin-top: 5px;">*image for illustration purposes only</p>
Product Ref:		
Customer Ref:		
Depth (cm):	22 (approx.)	
Additional Info:	PLEASE DONOT TO BEND/FOLD MATTRESS	

<p>Tulip Ortho Contract S5 Mattress Construction * <small>image for illustration purposes only</small></p> 	<ol style="list-style-type: none"> 1. Open Coil Spring Unit 12.5 gauge 2. Wire Rod Edge 6 Gauge 3. 1050 Gms Needed Polyprop Pad x 2 4. 900 Gms Needed filling (60% Wool) x 2 5. Fibre Bonded Pad 500 Gms 6. Oriza 8 x Butterfly clips + Wool Safe Barrier
--	---

Fabric

Type	Composition	Treatment	Add. Treatment
Loxley	Cotton	Standard Fr	Fr2

Additional Fr Insulator

Type	Weight	Composition	Add. Info
Inter - Liner	300 Gms	Wool	N/A

Quilting / Tufting

Panel Quilted	Hand Tufted	Border Quilted	Border quilt design
N/A	Yes	Yes	Wavy

Additional Treatment

Anti -Allergy	Hypo-Allergenic	Mattress Tape edge	Water Resistant
Yes	Yes	Fr2	Yes


Handles/Air Vents

Handles	Air vents		
N/A	Yes	N/A	Chrome
		N/A	Either Side

Pads/Fillings/Fibre

		Micro Layered	General
Layer 1 Composition	Polyprop Needed Pad		X
Layer 1 Weight	1050 Gms		
Layer 2 Composition	Needed Filling	X	
Layer 2 Weight	900 Gms		
Layer 3 Composition	Fibre Bonded Pad	X	
Layer 3 Weight	500 Gms		

Spring Unit

	Type	Open Coil
	Spring Gauge	12.5 gauge
	Wire Rod Edge	6 gauge
	Side Supports	Yes

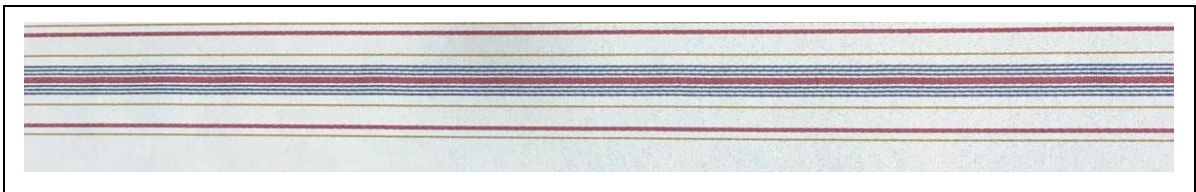
Packaging

Mattress bag Weight	300 gauge
---------------------	-----------


Mattress Firmness 1 > 10 (10 being firmest)

1	2	3	4	5	6	7	8	9	10
---	---	---	---	---	---	---	---	---	----

Fabric



Fire Labelling/Traceability

Fire label	Batch Codes
	<p>190518 - prep</p> <p>220518 - production</p>